

CATALOGO MOTORI

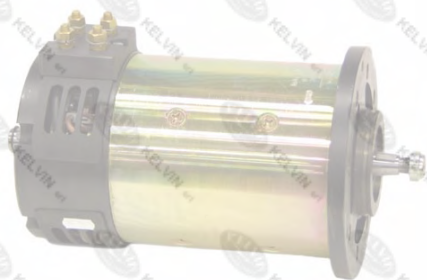


SRL

CODICE: **KLMT1624-**

005409
AT090001

0136501087



ROTAZIONE V.L.A.: Entrambi i sensi

Ø 150 X 257 morsa 3+1

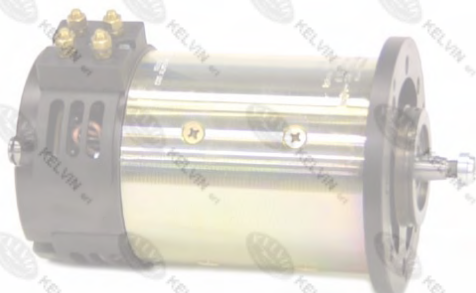
CARR.: **ATLET** ATLET
MOTORE: **BOSCH**
TIPO: **AMP4656<=>S**
ARM. V1: **24** A1:
ECC.: **SERIE**
V2: A2:
KW: **1,1** HP
U./MIN: **1500**

APPLIC.: **Trazione** SERV: **S2-60'**

CODICE: **KLMT1107-**

100119
A100119
AT09008

0136501095



ROTAZIONE V.L.A.: Entrambi i sensi

Ø 150 X 261 morsa 3+1

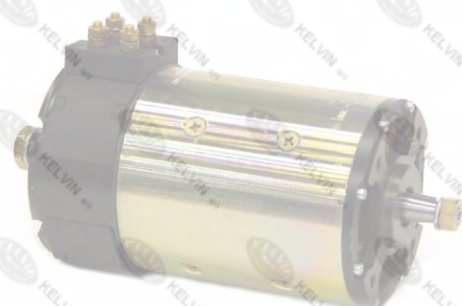
CARR.: **ATLET** ATLET
MOTORE: **BOSCH**
TIPO: **AMP4667<=>S**
ARM. V1: **24** A1:
ECC.: **SERIE**
V2: A2:
KW: **(1,6) - 2** HP
U./MIN: **(2700) - 22**

APPLIC.: **Trazione** SERV: **(S2-60')**

CODICE: **KLMT1050-**

005692
1030418

0136501061



ROTAZIONE V.L.A.: Entrambi i sensi

Ø 150 X 248 morsa 3+1

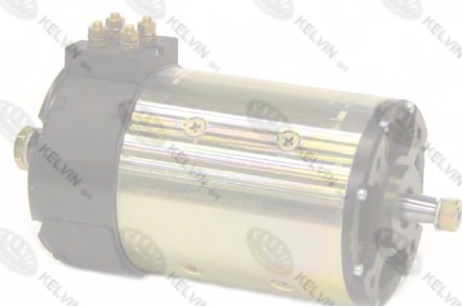
CARR.: **ATLET - ICEM** VARI
MOTORE: **BOSCH**
TIPO: **AMP4311<=>S**
ARM. V1: **24** A1:
ECC.: **SERIE**
V2: A2:
KW: **1** HP
U./MIN: **1300**

APPLIC.: **Trazione** SERV: **S2**

CODICE: **KLMT1049-**

004767
1030419

0136501062



ROTAZIONE V.L.A.: Entrambi i sensi

Ø 150 X 253 morsa 3+1

CARR.: **ATLET - ICEM** VARI
MOTORE: **BOSCH**
TIPO: **AMP4666<=>S**
ARM. V1: **24** A1:
ECC.: **SERIE**
V2: A2:
KW: **2** HP
U./MIN: **1800**

APPLIC.: **Trazione** SERV: **S2**

CODICE: **KLMT1868-**

100751
A100751
AT090013



ROTAZIONE V.L.A.: Entrambi i sensi

Ø 150 X 258 morsa 2+2

CARR.: **ATLET** TPL T200
MOTORE: **ISKRA**
TIPO: **AMP2601 4A-25A**
ARM. V1: **24** A1:
ECC.: **SEPARATA**
V2: A2: **10**
KW: **2** HP
U./MIN: **2200**

APPLIC.: **Trazione** SERV: **S2=25MIN**

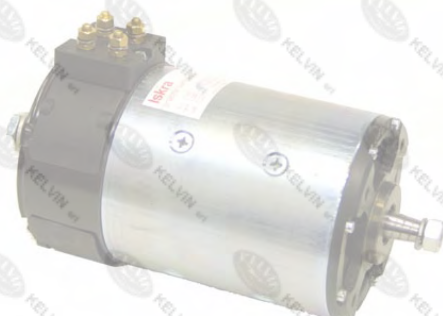
CATALOGO MOTORI



SRL

CODICE: **KLMT3458-**

086113



ROTAZIONE V.L.A.: Entrambi i sensi

Ø 150 X 252 mors 2+2

CARR.: **ATLET** ATLET
 MOTORE: **ISKRA**
 TIPO: **AMP2609<=>**
 ARM. V1: **24** A1:
 ECC.:
 V2: A2:
 KW: **2,0** HP
 U./MIN: **2200**

APPLIC.: **Trazione** SERV: **S2-30'**

CODICE: **KLMT2657-**

A100763



ROTAZIONE V.L.A.: Entrambi i sensi

Ø 114 X 181 mors 2

CARR.: **ATLET** ATLET
 MOTORE: **KORDEL-LEROY**
 TIPO: **KMP112ORL**
 ARM. V1: **48** A1: **11**
 ECC.: **M. PERMANENTE**
 V2: A2:
 KW: **0,4** HP
 U./MIN: **3000**

APPLIC.: **Servosterzo** SERV: **S1**

CODICE: **KLMT1531-**

4538-7-48B



ROTAZIONE V.L.A.: Antiorario

Ø 120 X 263 mors 2

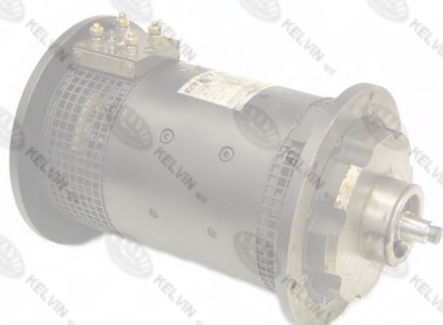
CARR.: **ATLET** RTL
 MOTORE: **SPECMA**
 TIPO: **BA3739-4538-7-48B**
 ARM. V1: **48** A1: **27**
 ECC.: **M. PERMANENTE**
 V2: A2:
 KW: HP **3/4**
 U./MIN: **2400**

APPLIC.: **Servosterzo** SERV: **CONT.**

CODICE: **KLMT3320-**

006476

006476



ROTAZIONE V.L.A.: Entrambi i sensi

Ø 200 X 353 mors 4

CARR.: **ATLET** ATLET
 MOTORE: **THRIGE-TITAN ELECTR**
 TIPO: **TTL200BV**
 ARM. V1: **48** A1: **150**
 ECC.: **SERIE**
 V2: A2:
 KW: **5,8** HP
 U./MIN: **2300**

APPLIC.: **Trazione** SERV: **S2-60'**